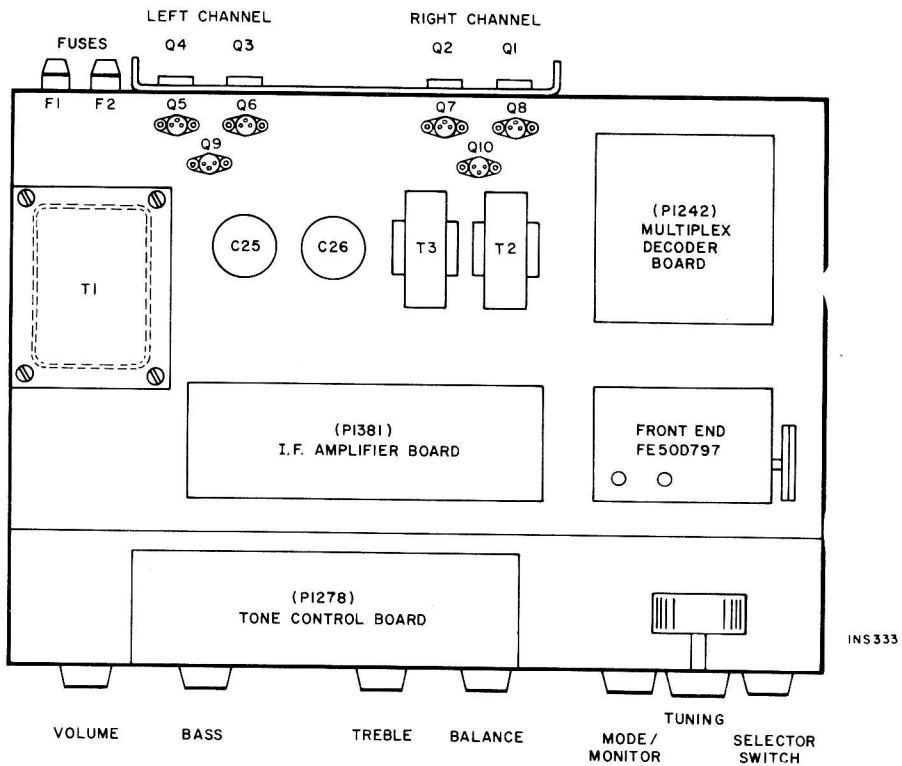
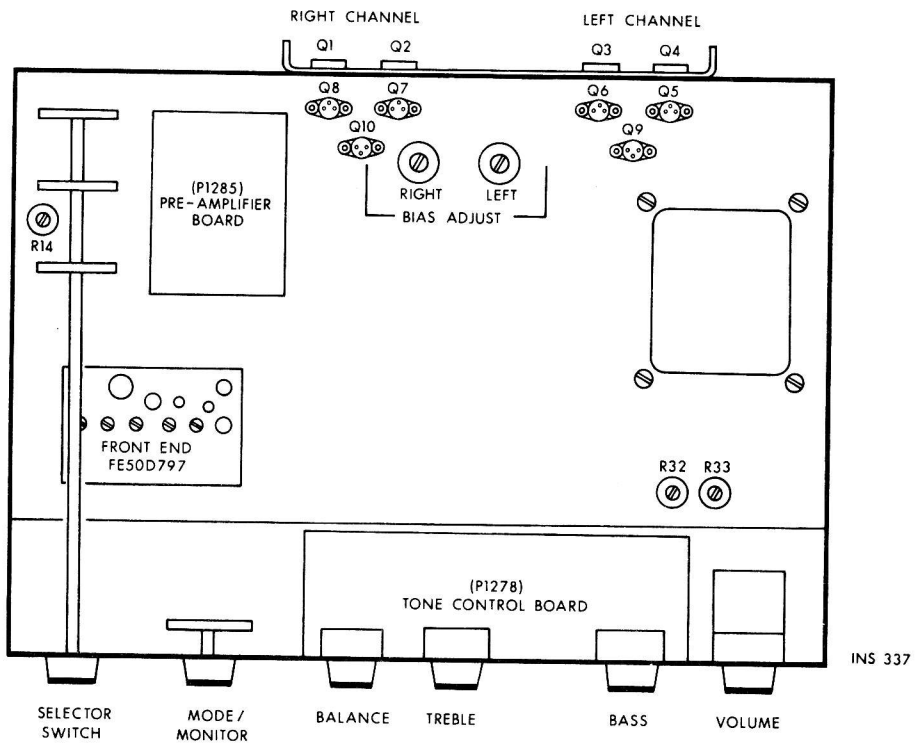


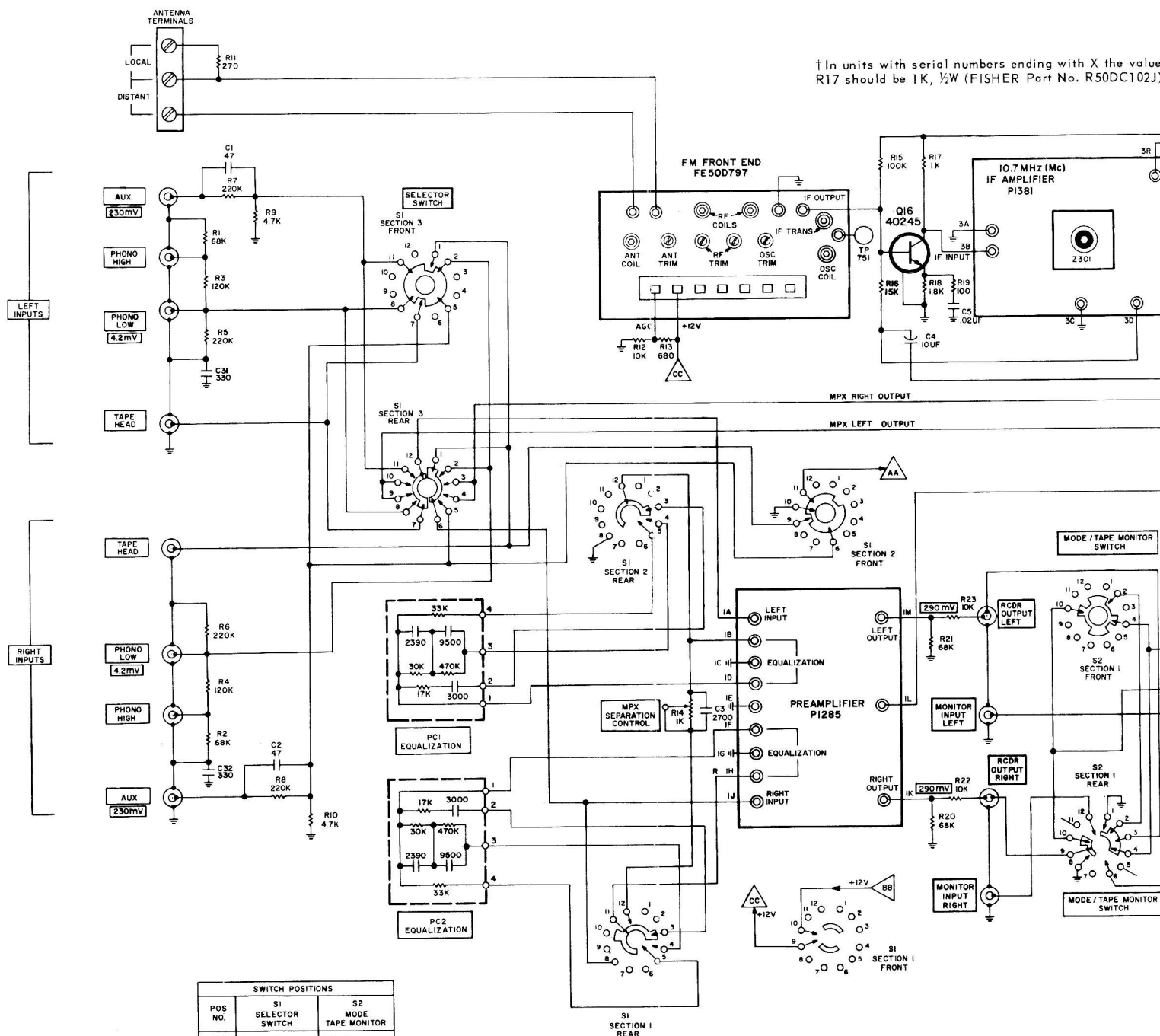
MAIN CHASSIS

TOP



BOTTOM





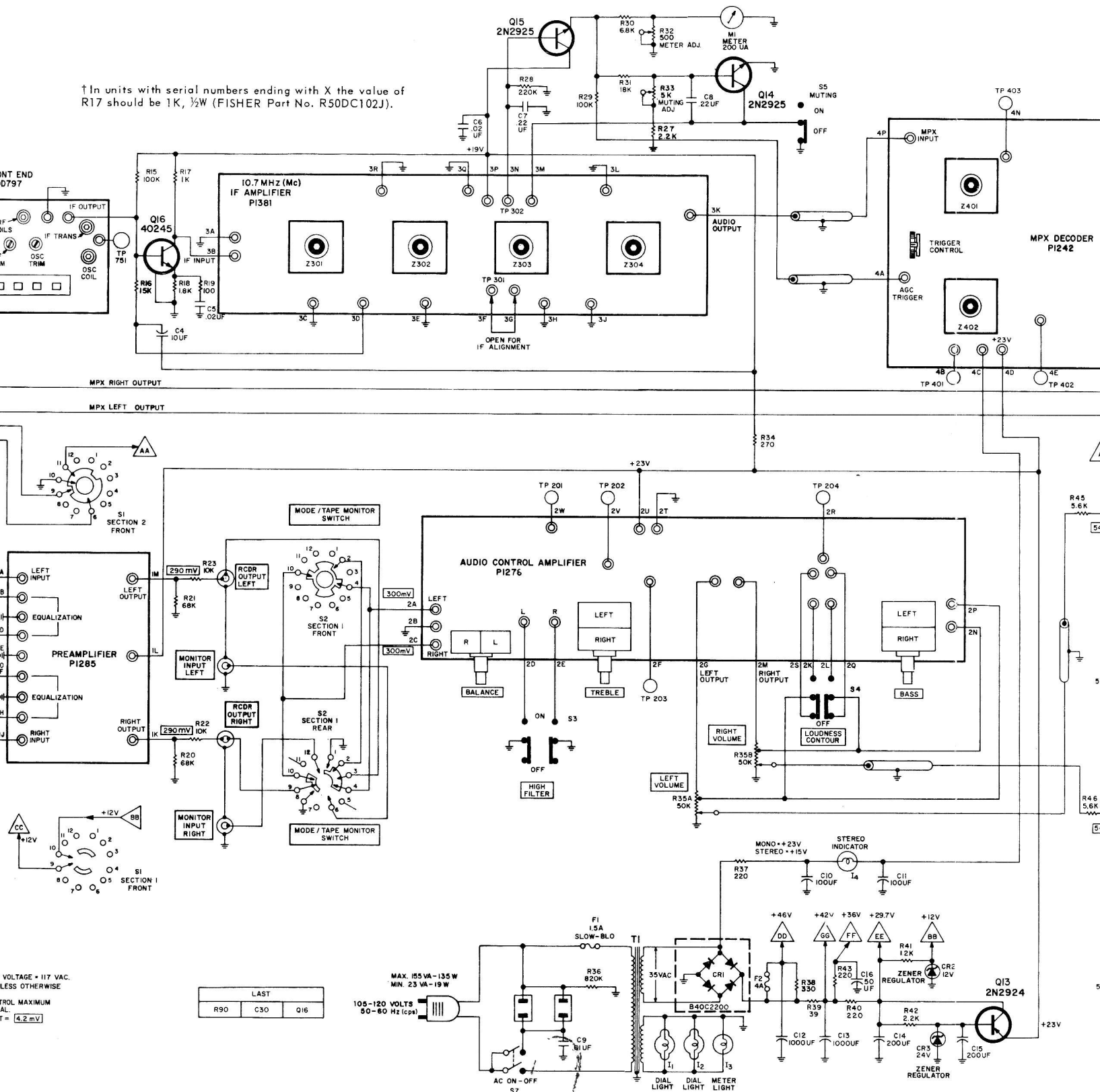
† In units with serial numbers ending with X the value of R17 should be 1K, 1/2W (FISHER Part No. R50DC102J)

| SWITCH POSITIONS | | |
|------------------|--------------------|----------------------|
| POS NO. | S1 SELECTOR SWITCH | S2 MODE TAPE MONITOR |
| 1 | TAPE HEAD | MONO |
| 2 | PHONO MAG. | STEREO |
| 3 | FM-AUTO | STEREO TAPE |
| 4 | FM-MONO | MONO TAPE |
| 5 | AUX | |

- NOTES:
1. FOR ALL VOLTAGE AND CURRENT MEASUREMENTS LINE VOLTAGE = 117 VAC.
 2. DC VOLTAGE MEASURED WITH DC-VTVM TO CHASSIS, UNLESS OTHERWISE INDICATED, WITH NO SIGNAL INPUT.
 3. USE AC-VTVM FOR 1kHz SIGNAL TRACING; VOLUME CONTROL MAXIMUM COUNTERCLOCKWISE, FILTERS OFF, ALL OTHER CONTROLS NORMAL.
 4. □ INDICATES 1kHz SIGNAL LEVELS FROM PHONO INPUT = 4.2 mV TO PA OUTPUT = 11.8V ACROSS 4Ω LOAD (1 kHz +1kc)

| LAST | | |
|------|-----|-----|
| R90 | C30 | Q16 |

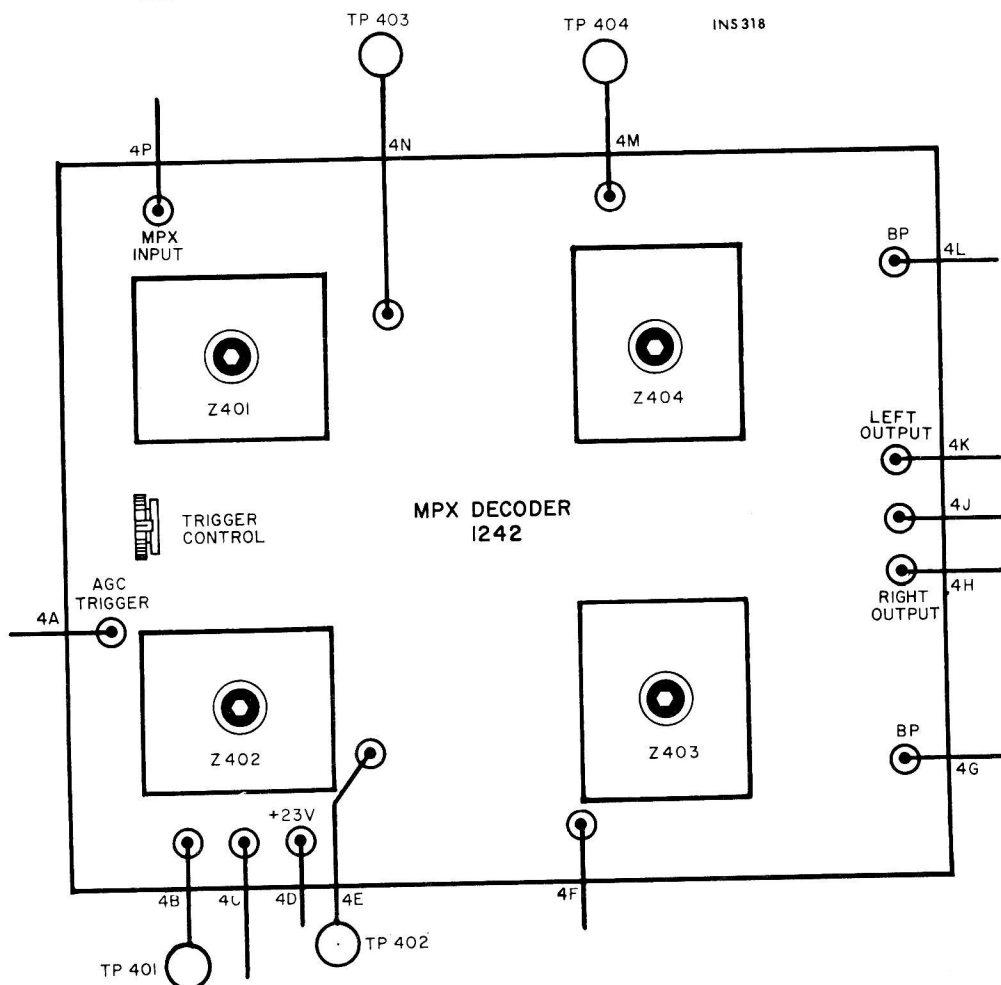
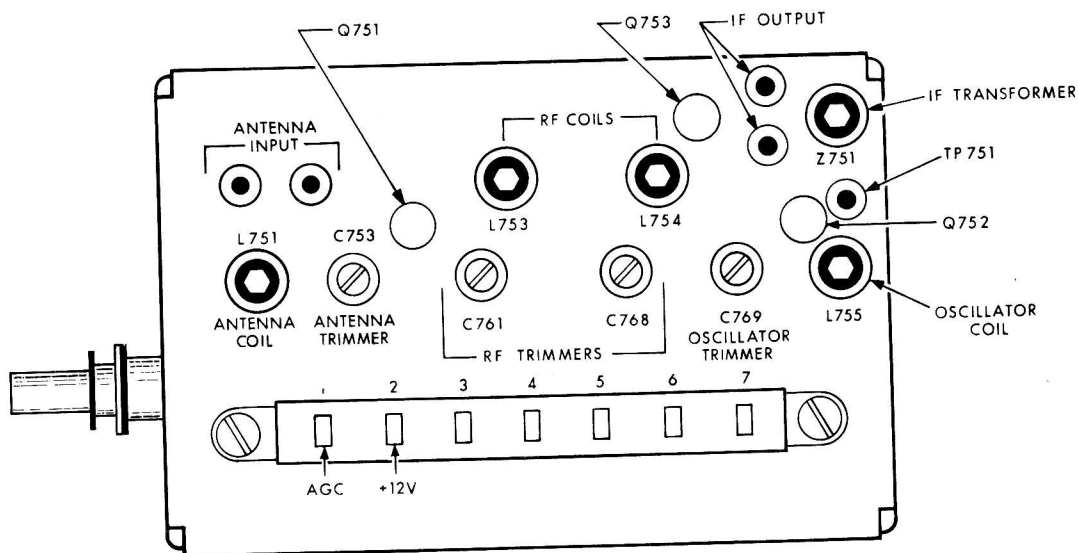
† In units with serial numbers ending with X the value of R17 should be 1K, ½W (FISHER Part No. R50DC102J).

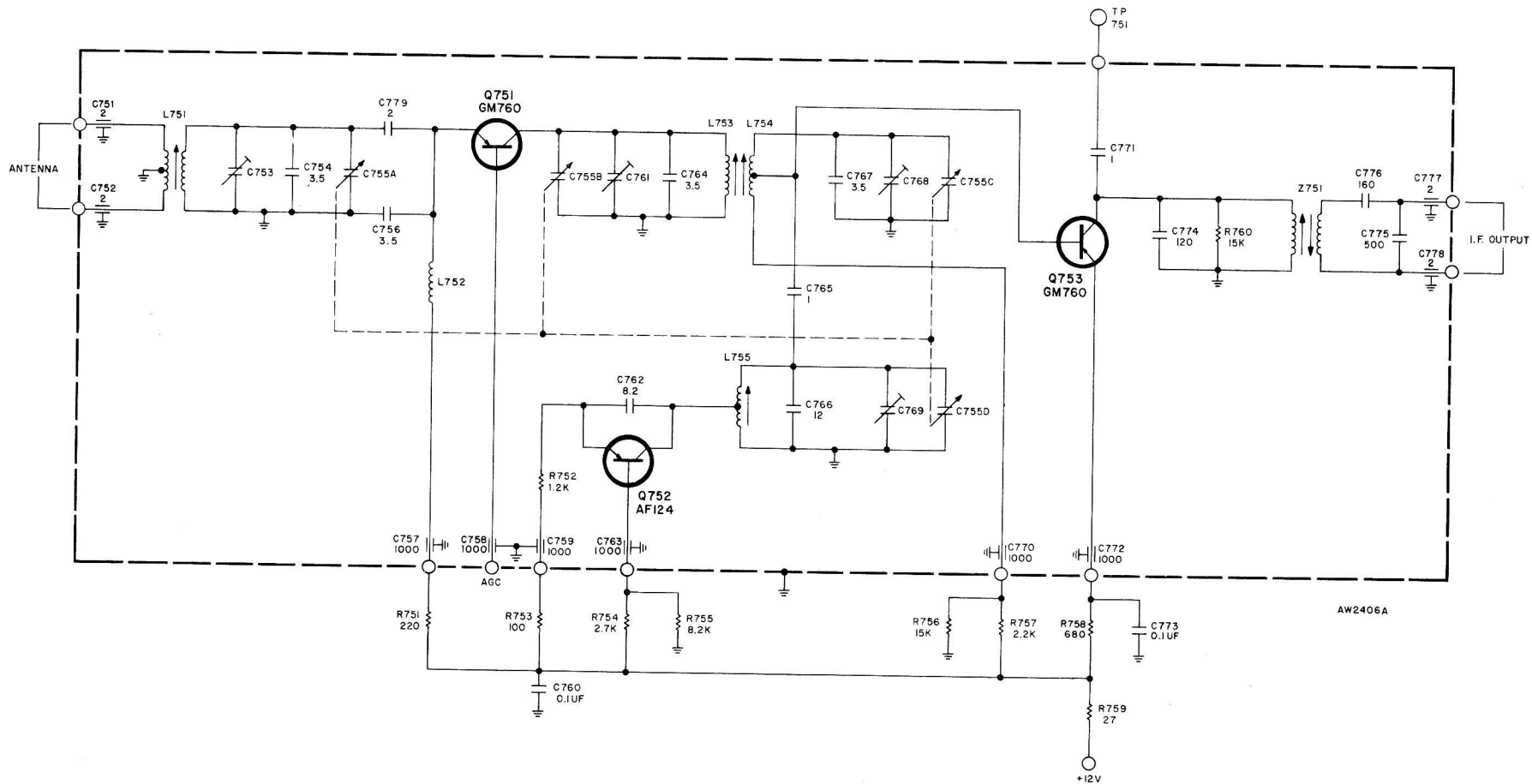


(ALSO SEE OTHER PAGES)

MAIN CHASSIS

FISH





1242 MULTIPLEX DECODER

