

PARTS LIST AND SERVICE INFORMATION FOR PHILCO-TROPIC RADIO MODELS 3010 and 3010-I, CODES 123, 124, and 125

REPLACEMENT PARTS LIST

NOTE: Part numbers identified by an asterisk (*) are general replacement items. These numbers may not be identical with those on factory parts. Also, the electrical values of some replacement items may differ from the values indicated in the schematic diagram and parts list. The values substituted in any case are so chosen that the operation of the equipment will either be unchanged or improved. When ordering replacements, use only the "Service Part No." DO NOT USE THE REFERENCE SYMBOL.

| Reference Symbol | Description | Service Part No. | Reference Symbol | Description | Service Part No. |
|------------------|---|------------------|------------------|---------------------------|------------------|
| C1 | Condenser, aerial isolating, .0022 μ f. | 45-3505-54* | S1 | Switch, band | 42-1917 |
| C2 | Condenser, fixed trimmer, 5 μ f. | 30-1224-28 | S2 | Switch, power on-off | Part of R7 |
| C3 | Condenser, tuning, 2-section | 31-2757 | T1 | Transformer, aerial | 32-4461 |
| C3A | Condenser, trimmer, aerial | Part of C3 | T2 | Transformer, osc. | 32-4462-1 |
| C3B | Condenser, trimmer, osc. | Part of C3 | T3 | Transformer, output | Part of LS1 |
| C4 | Condenser, a-v-c isolating, 100 μ f. | 62-110009001* | TC1A | Tuning core, 1st i-f pri. | Part of Z1 |
| C5 | Condenser, d-c blocking, 56 μ f. | 62-056409001* | TC1B | Tuning core, 1st i-f sec. | Part of Z1 |
| C6 | Condenser, trimmer, 2-section | 31-6476-23 | TC2A | Tuning core, 2nd i-f pri. | Part of Z2 |
| C6A | Condenser, padder, osc. | Part of C6 | TC2B | Tuning core, 2nd i-f sec. | Part of Z2 |
| C6B | Condenser, trimmer, osc. (bc.) | Part of C6 | W1 | Line cord | 41-3865 |
| C7 | Condenser, screen by-pass, .047 μ f. | 45-3505-28* | Z1 | Transformer, 1st i-f | 32-4377-2 |
| C8 | Condenser, a-v-c filter, .047 μ f. | 45-3505-28* | Z2 | Transformer, 2nd i-f | 32-4378 |
| C9 | Condenser, d-c blocking, .0068 μ f. | 45-3505-40* | | | |
| C10 | Condenser, d-c blocking, .0068 μ f. | 45-3505-40* | | | |
| C11 | Condenser, grid by-pass, 220 μ f. | 62-122001001 | | | |
| C12 | Condenser, tone compensation, .033 μ f. | 45-3505-44* | | | |
| C13 | Condenser, electrolytic, 3-section | 30-2570-50 | | | |
| C13A | Condenser, filter, 20 μ f. | Part of C13 | | | |
| C13B | Condenser, filter, 25 μ f. | Part of C13 | | | |
| C13C | Condenser, filter, 30 μ f. | Part of C13 | | | |
| C14 | Condenser, line by-pass, .05 μ f. | 45-3505-32 | | | |
| I1 | Lamp, pilot | 34-2068 | | | |
| J1 | Socket | 27-6252-6 | | | |
| J2 | Jack, a-c | 27-6240-1 | | | |
| LS1 | Speaker, p-m, Code 124 | 36-1625-14 | | | |
| | Speaker, p-m, Codes 123, 125 | 36-1627-10 | | | |
| P1 | Plug, male, a-c | Part of W1 | | | |
| P2 | Plug, a-c line | Part of W1 | | | |
| P3 | Plug, shorting | 27-4785-14 | | | |
| R1 | Resistor, bc, primary loading, 22,000 ohms | 66-3228340* | | | |
| R2 | Resistor, a-v-c load, 1 megohm | 66-5108340* | | | |
| R3 | Resistor, grid return, 33,000 ohms | 66-3338340* | | | |
| R4 | Resistor, special surge limiting | 33-1343-3 | | | |
| R5 | Resistor, screen filter, 4700 ohms | 66-2478340 | | | |
| R6 | Resistor, diode load, 2.2 megohms | 66-5228340* | | | |
| R7 | Resistor, volume control (with off-on switch) 500,000 ohms, Codes 123, 125 | 33-5566-4 | | | |
| | Resistor, volume control (with off-on switch), 500,000 ohms, Code 124 | 33-5566-32 | | | |
| R8 | Resistor, grid return, 10 megohms | 66-6108340* | | | |
| R9 | Resistor, plate load, 470,000 ohms | 66-4478340* | | | |
| R10 | Resistor, grid return, 470,000 ohms | 66-4478340* | | | |
| R11 | Resistor, cathode bias, 150 ohms | 66-1158340 | | | |
| R12 | Resistor, filter, 1000 ohms | 66-2108340 | | | |
| R13 | Resistor, filter, 100 ohms | 66-1104340 | | | |

MISCELLANEOUS

| Description | Service Part No. |
|---|------------------|
| Cabinet, brown, Codes 123, 124 | 10769-1 |
| Cabinet, brown, Code 125 | 10875-1 |
| Cabinet, ivory, Codes 123, 124 | 10769-2 |
| Back | 54-8048 |
| Fastener, back (4), Code 123 | W-2235-2FA9 |
| Fastener, back (4), Code 124 | W-2235-FA9 |
| Baffle-and-cloth assembly, Codes 123, 124 | 40-7778-1 |
| Baffle-and-cloth assembly, Code 125 | 40-8678 |
| Dial scale | 54-5121 |
| Strap, scale (r.h.) | 56-7373-1FE11 |
| Strap, scale (l.h.) | 56-7373-FE11 |
| Grille, plastic, Codes 123, 124 | 54-4728-2 |
| Speed clip (4) | 1W56920FE7 |
| Knob, brown (2), Codes 125, 123 | 54-4718-2 |
| Knob, brown (2), Code 124 | 54-4718-16 |
| Knob, ivory (2), Codes 125, 123 | 54-4718-14 |
| Knob, ivory (2), Code 124 | 54-4718-20 |
| Knob, short-wave switch | 54-4527-28 |
| Dial-backplate assembly | 76-6338 |
| Dial cord, 25-foot spool | 45-8750* |
| Spring, gang drive | 28-8954 |
| Spring, pointer drive | 28-8953 |
| Dial pointer | 53-5630-34 |
| Pilot-lamp assembly | 27-6233-2 |
| Plug, a-c adapter (continental) | L-3275 |
| Socket, miniature (5) | 27-6203 |
| Tuning-shaft assembly, Code 124 | 31-2738-9 |
| Tuning-shaft assembly, Codes 123, 125 | 31-2738-3 |

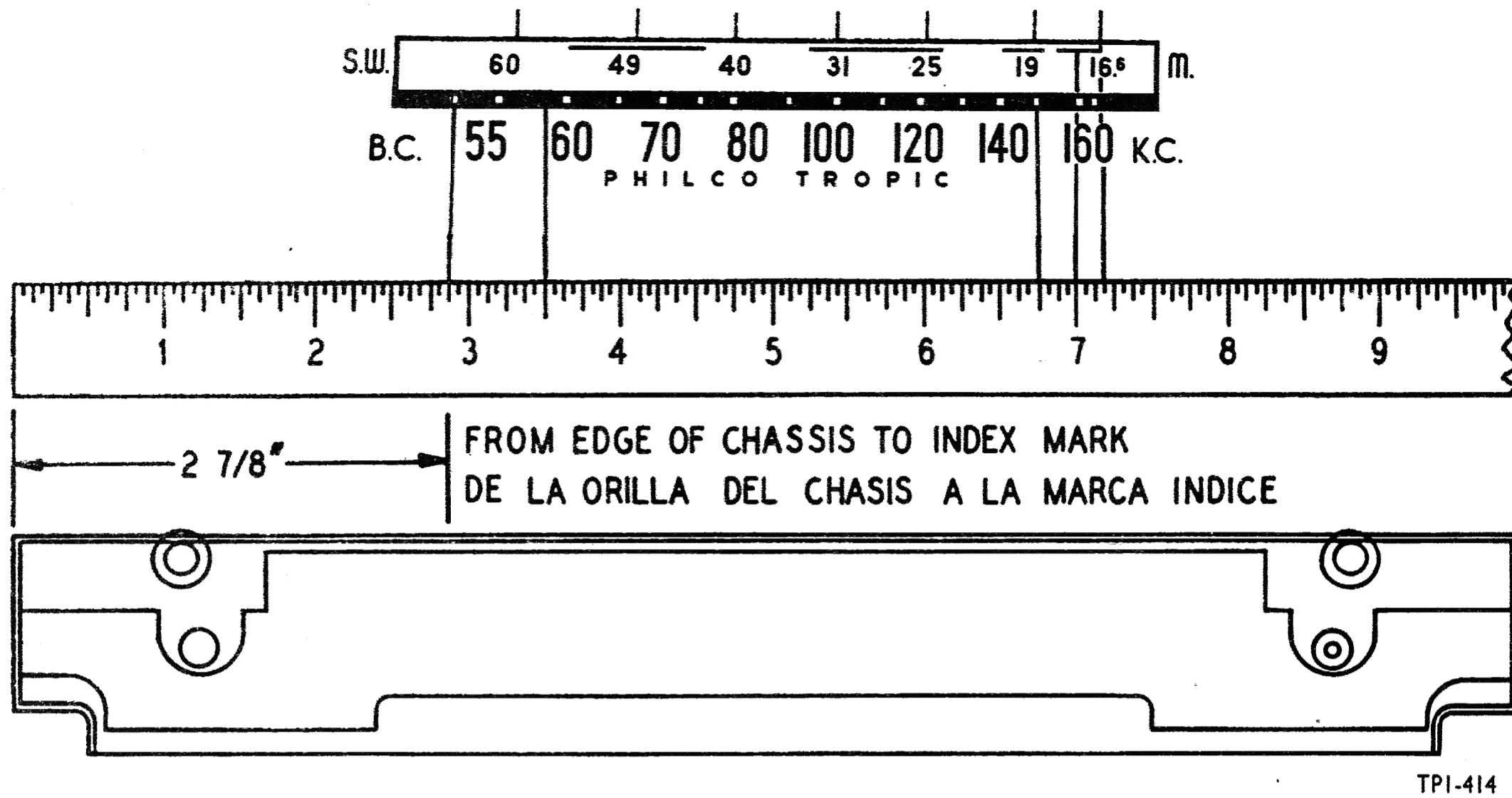


Figure 1. Dial-Calibration Measurements
 Figura 1. Medidas para la Calibración del Cuadrante

ALIGNMENT

DIAL POINTER — With the tuning-condenser plates fully meshed, adjust the dial pointer to coincide with the index mark in the left-hand corner of the dial (just to the left of the "55" mark).

SIGNAL GENERATOR — Connect the ground lead to the chassis, through a .01- μ f. isolating condenser, and the output lead as indicated in the chart. Use modulated output.

RADIO CONTROLS — Set the volume control to maximum. Set the band switch, tuning control, and signal-generator frequency as indicated in the chart.

OUTPUT METER — Connect between the lugs indicated on the rear of the chassis.

OUTPUT LEVEL — During alignment, the signal-generator output must be attenuated to hold the output-meter reading below 1.5 volts.

ALINEAMIENTO

INDICADOR DEL CUADRANTE — Con el condensador de sintonización completamente cerrado, ajústese el indicador del cuadrante de modo que coincida con la marca índice en la esquina izquierda del cuadrante (a la izquierda del "55").

GENERADOR DE SEÑALES — Conéctese el cable de tierra al chasis, a través de un condensador de .01 μ f., y el cable de salida como se indica en la tabla. Usese salida modulada.

CONTROLES DEL RADIO — Póngase el control de volumen al máximo. Fijense el conmutador de bandas, el control de sintonización y la frecuencia del generador de señales como se indica en la tabla.

MEDIDOR DE SALIDA — Conéctese a los terminales indicados en la parte posterior del chasis.

INTENSIDAD DE LA SALIDA — Durante el alineamiento, atenúese la salida del generador de señales para que la indicación en el medidor sea siempre menor de 1.5 voltios.

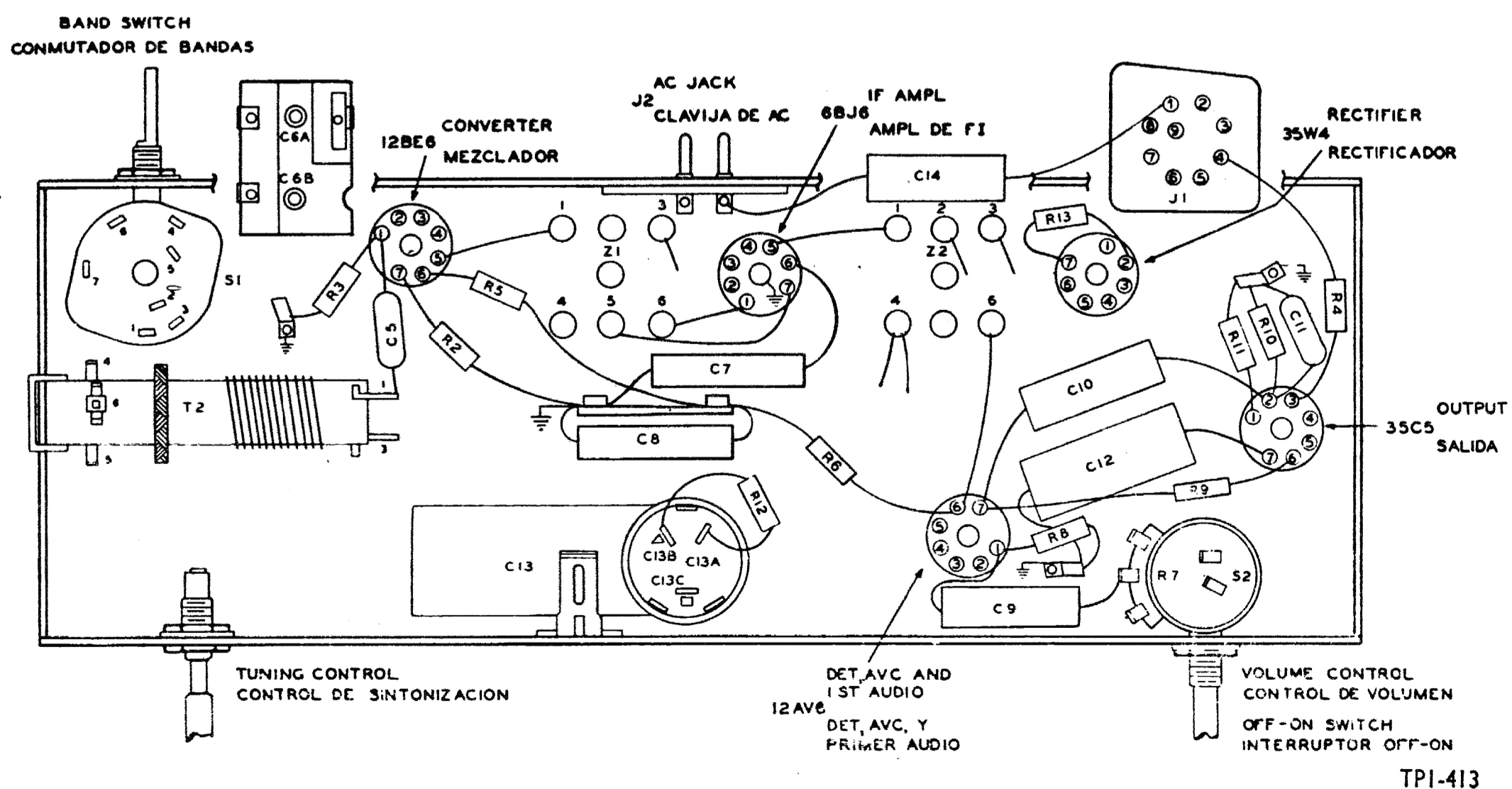
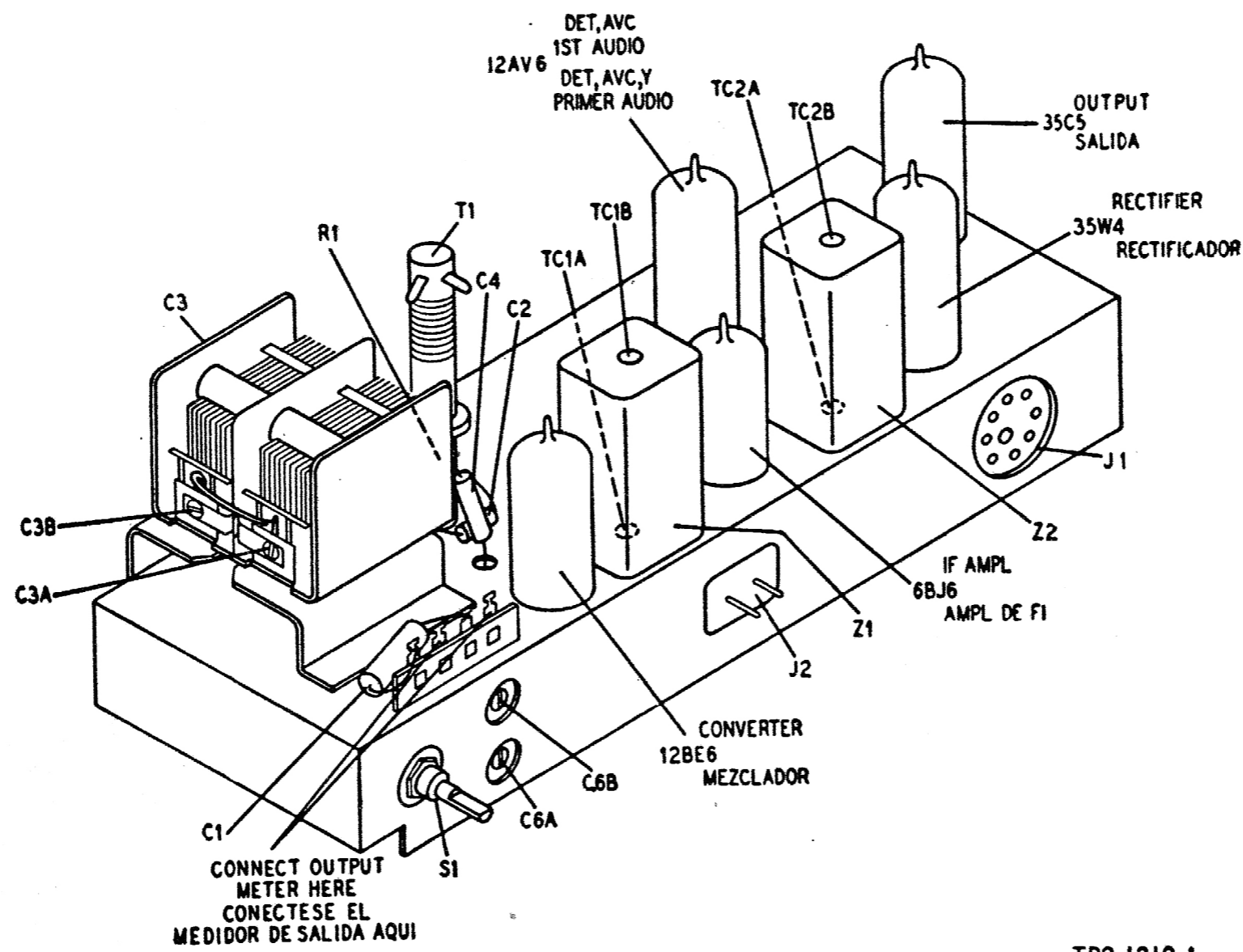


Figure 2. Symbolized Chassis, Showing Parts Placement
 Figura 2. Vista del Chasis, Mostrando la Ubicación de las Partes



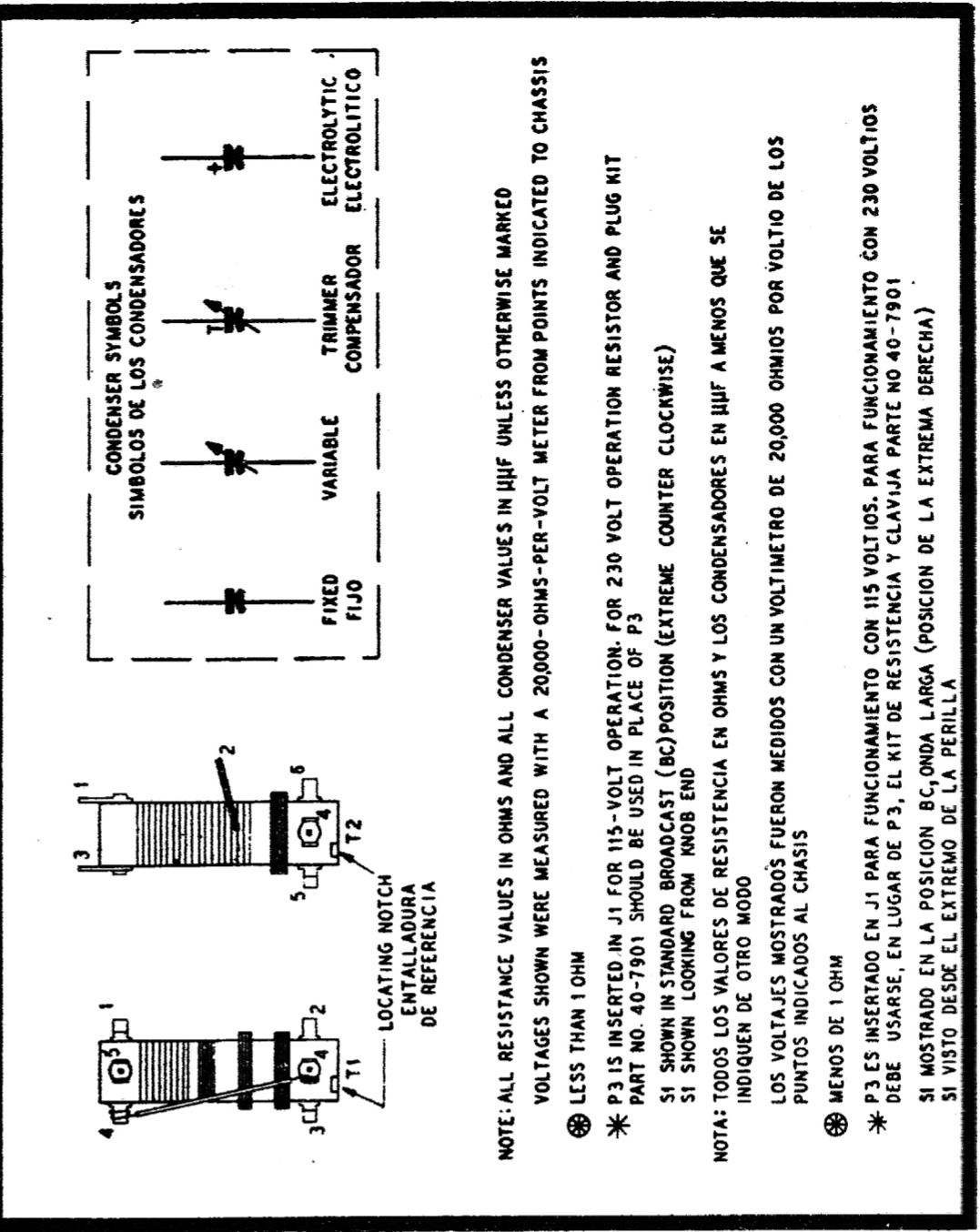
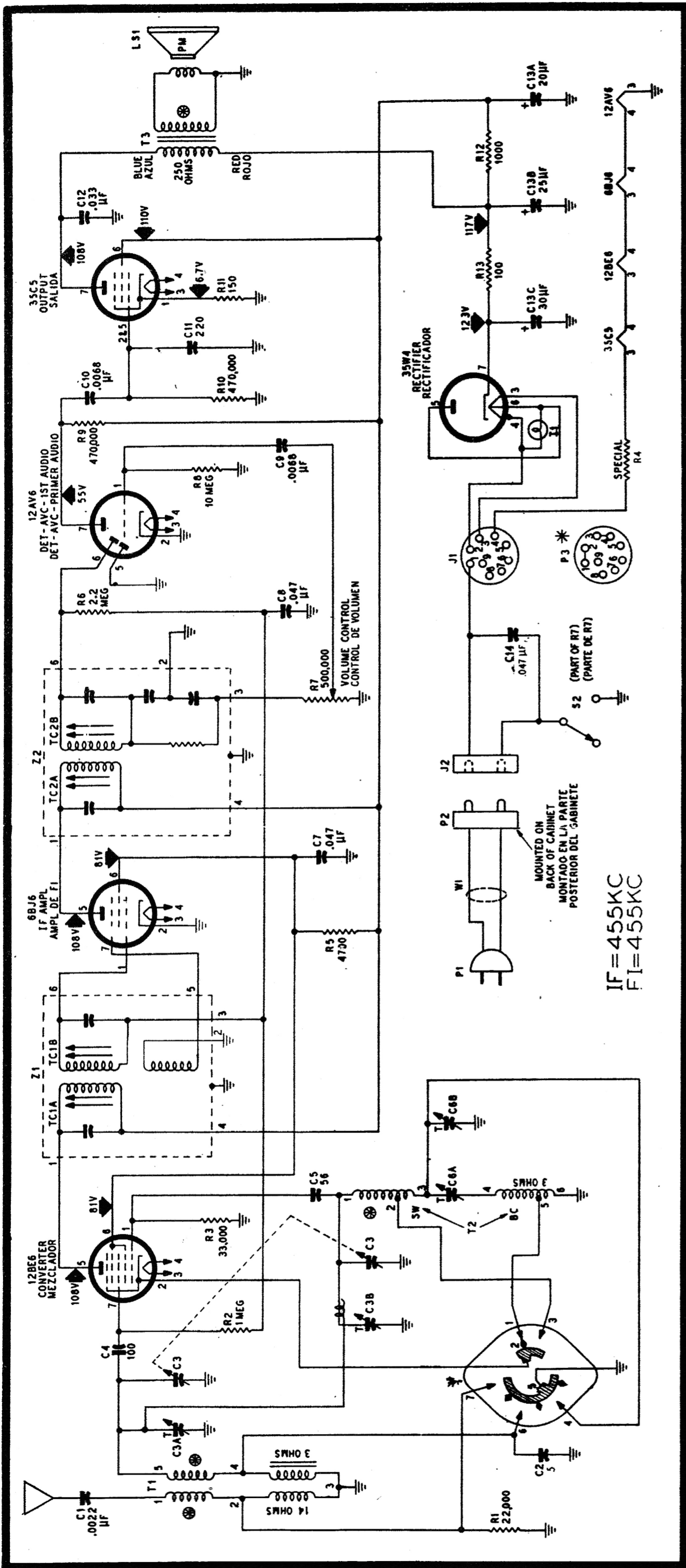
TP9-1210-1

Figure 3. Top View of Chassis, Showing Trimmer Locations
 Figura 3. Vista Superior del Chasis, Mostrando la Posición de los Compensadores

| STEP PASO | SIGNAL GENERATOR GENERADOR DE SEÑALES | | RADIO | | | ADJUST AJUSTENSE |
|--------------|--|----------------------------|----------------------------------|----------------------------|--|--|
| | CONNECTION TO RADIO CONEXION AL RADIO | DIAL SETTING FRECUENCIA | BAND SWITCH CONMUT. DE BANDAS | DIAL SETTING FRECUENCIA | SPECIAL INSTRUCTIONS INSTRUCCIONES ESPECIALES | |
| 1 | Through .1 $\mu f.$ condenser to rear section of tuning condenser. A la sección posterior del cond. de sintonización, a través de un cond. de .1 $\mu f.$ | 455 kc. | BC | 580 kc. | Adjust, in order given, for maximum output; then repeat. Ajústense, en el orden dado, para salida máxima; luego repítase. | TC2B (2nd i-f sec.) TC2A (2nd i-f pri.) TC1B (1st i-f sec.) TC1A (1st i-f pri.) |
| 2 | Through 400-ohm resistor to aerial lead. Al alambre de antena, a través de una resist. de 400 ohms. | 18 mc. | SW | 16.6 meters | Adjust for maximum output. Ajústese para salida máxima. | C3B (SW osc.) |
| 3 | Same as step 2. Igual que el paso 2. | 17 mc. | SW | 17.6 meters | Adjust for maximum output. Ajústese para salida máxima. | C3A (ant. SW) |
| 4 | Through 200 $\mu\mu f.$ condenser to aerial lead. Al alambre de antena, a través de un cond. de 200 $\mu\mu f.$ | 1500 kc. | BC | 1500 kc. | Adjust for maximum output. Ajústese para salida máxima. | *C6B (BC osc.) |
| 5 | Same as step 4. Igual que el paso 4. | 580 kc. | BC | 580 kc. | Adjust for maximum output. Ajústese para salida máxima. | *C6A (BC osc. tracking) |
| 6 | Repeat step 4. Repítase el paso 4. | | | | | |

*Rock tuning condenser while adjusting.

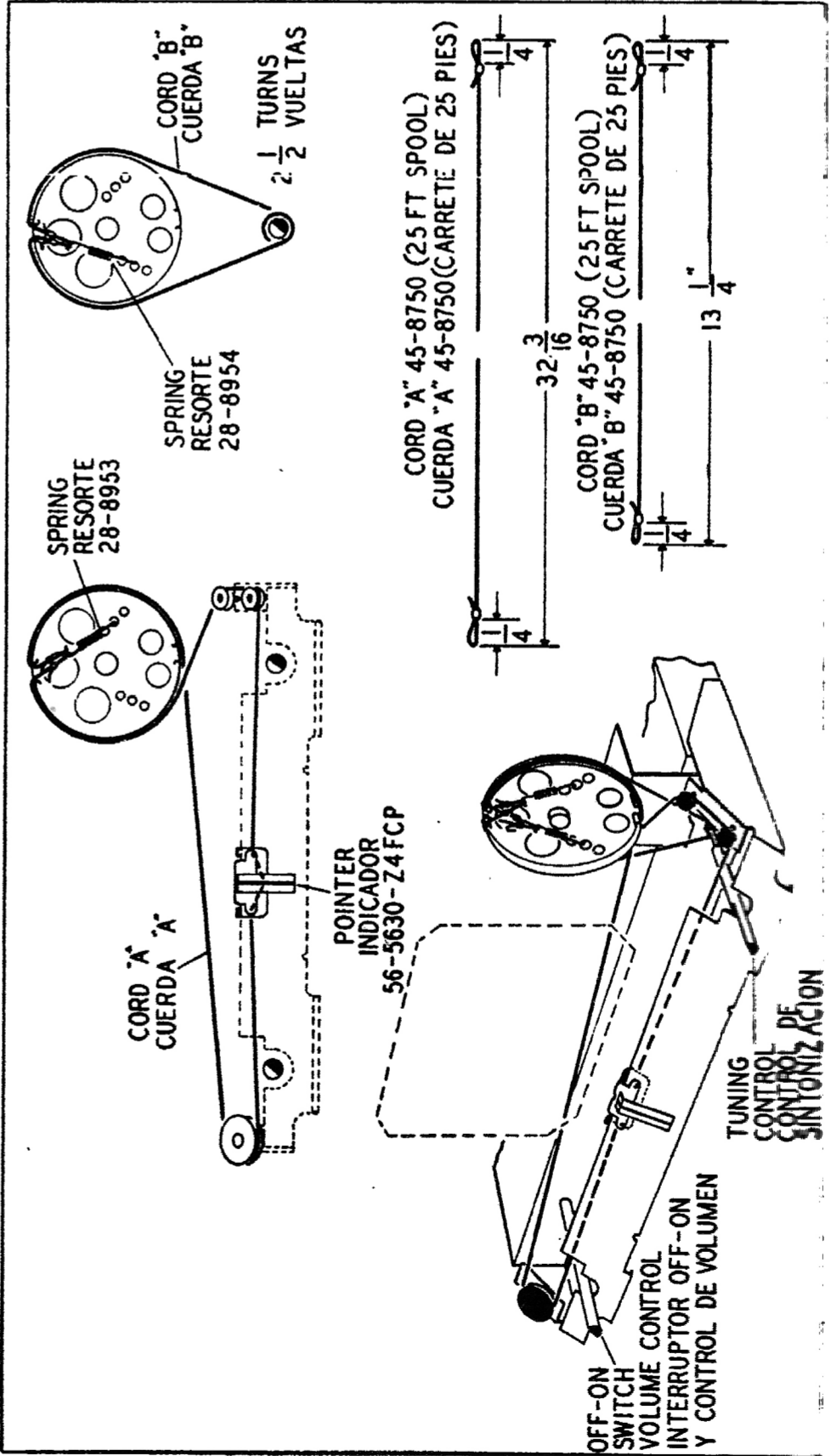
*Muévase el condensador de sintonización levemente de un lado a otro mientras se hace este ajuste.



TPO-860-1

Figure 4. Philco-Tropic Radio Models B010 and B0101, Codes 128, 124, 125, Schematic Diagram

Figure 5. Mounting and Installation Details of the Tuning Control



119 1212

Figure 6. Mounting and Installation Details of the Volume Control